

From: e-NAV Committee

EEP15/12/3  
Formerly e-NAV8/output/2  
24 September 2010

To: ANM, EEP & VTS Committees  
PAP

## **Liaison Note**

### **Draft IALA Plan for e-Navigation (rev 3)**

#### **1 Introduction**

This document (revised and agreed by the e-NAV Committee, taking account of comments from ANM, VTS and EEP) sets out IALA's vision for e-Navigation and outlines a work plan for carrying out the tasks that IALA has undertaken in support of the IMO initiative.

It draws on the documents shown in the list of references below, together with Liaison Notes from the VTS, EEP and ANM Committees and is intended as an input to PAP 20.

#### **2 IALA's Vision**

IALA recognises the trends in maritime operations towards enhancement of navigation for safety, security, efficiency, accountability and environmental responsibility. IALA has developed a strategy to embrace the continuing technical developments, to influence debate, and produce relevant recommendations and guidelines.

#### **3 External Constraints**

IALA is working within its remit of shore-based infrastructure and aids to navigation, including VTS, to support the IMO e-Navigation initiative.

The schedule of IMO meetings, principally MSC, NAV, COMSAR and STW, determines the deadlines for submissions to the e-Navigation Correspondence Group, re-established at NAV 56.

Another important consideration is the timetable of ITU. The next World Radio Conference in 2012 and the following one in about 2016, define the schedule for any changes or additions to the radio spectrum for e-Navigation and the meetings of ITU-R WP5B provide the opportunity for inputs.

Using the phase-in plan of IMO for ECDIS as a common time reference will have beneficial effects for all working areas involved. It will focus the work on the common goal and will require proper timing of individual supporting projects.

#### **4 Internal Considerations**

It is important that all the IALA Committees should be involved in the development of e-Navigation.

In particular, the ANM Committee has a key role in developing and verifying the user requirements, while the EEP committee has a key role in engineering, human factors, system reliability and remote monitoring and control aspects of e-Navigation.

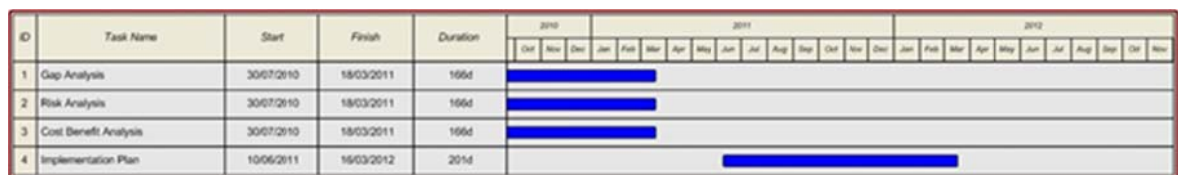
The VTS Committee is working in parallel on the concept of Vessel Traffic Management, defined as follows:

*"Vessel Traffic Management is the functional framework of harmonized measures and services to enhance the safety, security and efficiency of shipping and the protection of the marine environment in all navigable waters."*

The Working Groups of the IALA e-NAV Committee have developed shore-side user requirements (WG1), a World Wide Radio Navigation Plan (WG2), a Maritime Radio Communications Plan (WG4) and a shore-side architecture (WG5). The data structures and information portrayal are being worked on by WG5 and WG6 respectively. These efforts will form a large part of the effort required for the development of e-Navigation, but output must be available on time.

The tasks to which IALA is committed in support of the IMO initiative demand considerable time and resources. These tasks are the gap analysis for the shore-side infrastructure (2010/11) and contributions to the risk analysis and cost benefit analysis (2011).

## IALA e-Navigation Plan



## **6 References**

IALA e-Navigation Master Plan (draft) from AIS TWG Florida 2009

IALA Vision statement, by e-NAV Chair

VTM description (liaison from VTS Committee, as amended)

Shipboard Architecture document (as amended by WG2 and WG5)

WWRNP (from Tech for e-Nav, WG2)

MRCP (from Comms WG 4)

Draft e-NAV 201 /210 (as under development at WG5)

UMDM/UDOI description document (as under development WG5)

## **7 Action requested**

- 1 The VTS, EEP and ANM Committees are requested to consider this further revision of the IALA Plan for e-Navigation.
- 2 PAP is requested to consider taking a more active role in e-Navigation co-ordination across the Committees.